

DATASHEET

AQUAmodem™ Op2

Subsea optical modem



KEY FEATURES

- Short range interrogation, commanding and data download from subsea instruments
- Create a wireless serial data link
- Compatible with instruments with RS232 serial interfaces (RS485 compatibility optional)
- Depth rated to 3500 m

- New higher speed data transfer
- Suitable for work class ROVs

- Compatible with the new HYDROlog 3000 range, including HYDROlog 3000PT, PPT and PgT.

APPLICATIONS

- Hydrotest monitoring
- Real time data view
- Instrument status checks
- Subsea data download
- Redeploying instruments subsea

MODEM PACKAGES

- Complete modem set - including modem pair, subsea battery pack, and ROV, surface & subsea cable sets
- ROV side modem set - including ROV and test cables
- Subsea modem set - including subsea cable set and battery

Technical specification

Environmental	Operating Depth	3500 m
	Temperature	Operating: -5°C to 40°C Storage: -40°C to 65°C
Telemetry	Light band	Cyan visible light
	Operating Range	Typically 1 m depending on environment
	Transmission type	Digitally coded telemetry with error detection
	Typical Maximum Data Throughput*	10.2 kBytes/s
	Addressing	Up to 3 unique addresses, plus a universal / broadcast address
Mechanical	Dimensions	285 mm long by 72 mm max diameter; main housing diameter 60 mm
	Weight	4 kg in air, 3 kg in water
	Material	Stainless Steel 316 with Perspex window
Power	External Power	ROV unit 9 – 36 Vdc Subsea unit 6.5 - 32 Vdc
Wake up	Serial Wake Up	On receipt of RS232 serial data for subsea unit Optional on receipt of RS232 serial data for ROV unit
	Optical Wake Up	On receipt of optical interrogation
Interface	Electrical	RS232 levels (RS485 optional)
	Protocol	Any format – transparent link (link deals with the communication protocol)
	Baud rate	115200 baud

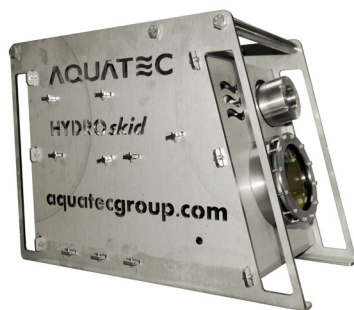
* Measured by transmitting packets of 2000 bytes, sending a packet every 250 ms. An average of 100 transmissions was used to calculate the speed.

Options

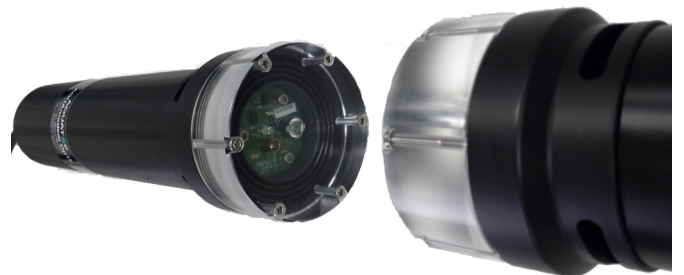
AQUAmodem Op2 - complete package	Pair of optical modems, including external battery pack, cables – Y cable, ROV cable, test cable
AQUAmodem Op2 - ROV side package	Single optical modem, including ROV cable, test cable
AQUAmodem Op2 - Subsea package	Single optical modem, including external battery pack, Y cable

Individual modems and accessories also available

Also available



HYDROskid 3000 featuring AQUAmodem Op2



AQUAmodem Op2L - light version

Contact us

t +44 (0)1256 416010 (UK) t +1-281-220-6035 (USA) e inquiry@aquatecgroup.com www.aquatecgroup.com

Aquatec House, Stroudley Road, Basingstoke, Hampshire, RG24 8FW, UK