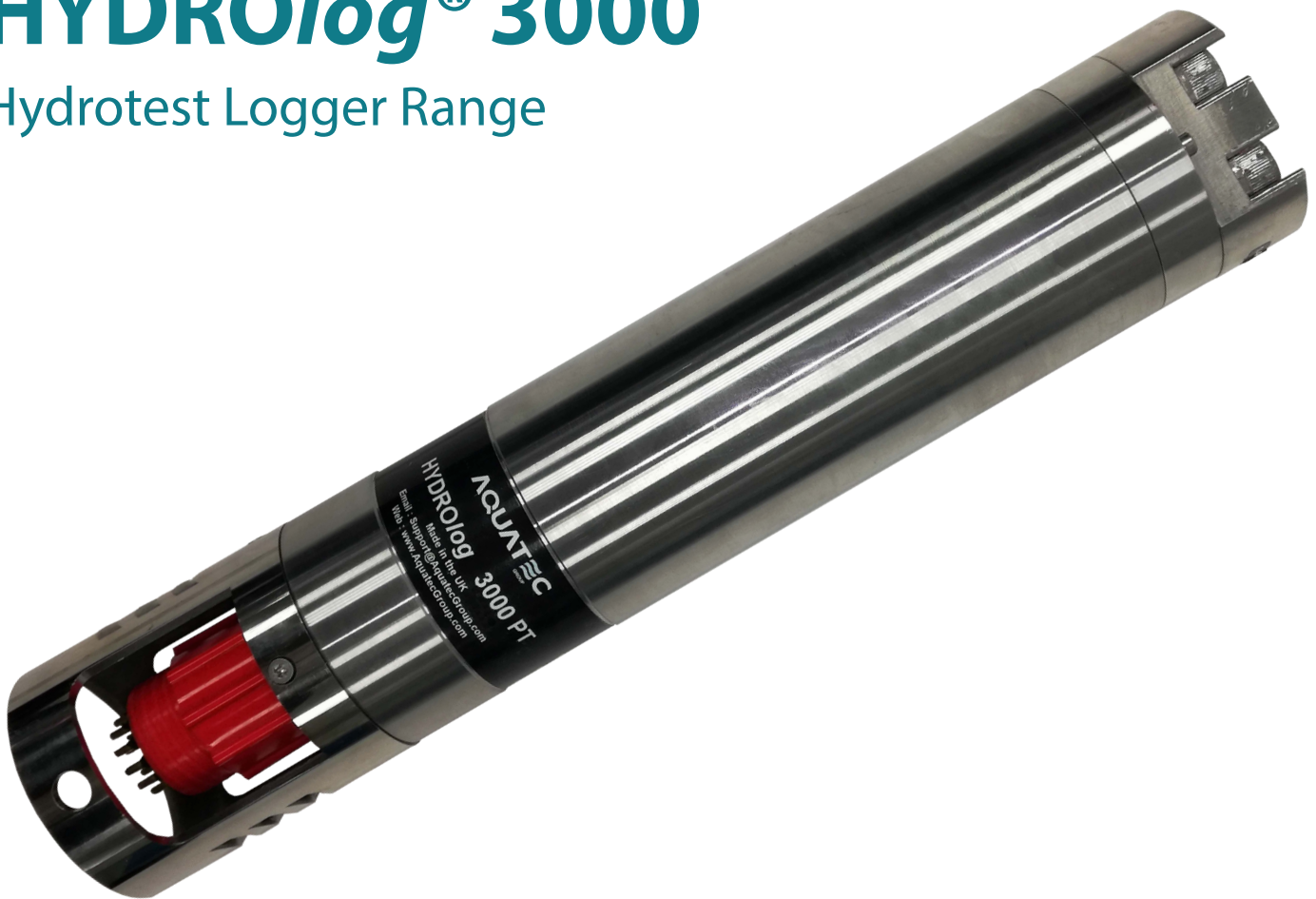


BUYER'S GUIDE

HYDROlog[®] 3000

Hydrotest Logger Range



Simply advanced

HYDROlog 3000 - simply advanced

The HYDROlog 3000 instruments form the core of the new HYDRO 3000 range of hydrotest monitoring instrumentation. The loggers are compact, and all measure test pressure to 1000bar and ambient temperature, to depths of up to 4000m. The integral pressure sensor has $\pm 0.05\%$ FS accuracy and $\pm 0.01\%$ FS precision. A variety of models are available, including dual pressure and gauge pressure loggers, as well as loggers to monitor external flow sensors in addition to test pressure.

New features include enhanced memory and faster download, as well as the ability to download data while logging. With increasingly stringent lithium battery shipping regulations, the HYDROlog 3000 overcomes potential transit issues by using standard field-replaceable batteries available across the world. Users can choose the type of battery most suitable for each deployment, whether alkaline, lithium or rechargeable.

KEY FEATURES

High accuracy and precision pressure (all models)

- $\pm 0.05\%$ FS accuracy, $\pm 0.01\%$ FS precision
- A variety of sensor options available – 300bar, 600bar, 1000bar



The simple way to monitor flow (flow models)

- Standard instrument monitors one external flow sensor – TTL or sine wave
- Live sensor view via AQUAtalk when connected
- Multiple flow sensors and pressures can be monitored with the HYDROlog 3000Fc custom range, which utilises Aquatec's innovative smart sensor interface.
- Example custom configuration: 8 flow sensors (measuring flow and concentration) and 3 external pressures

Flexible deployment

- All instruments log data internally and have real time reporting capability as standard
- Choose your sampling regime with continuous and burst sampling options
- Rated to 4000m, covering typical subsea operations

Durable and robust

- Manufactured from 316 Stainless Steel, the logger is designed for the rigours of operational use.
- All loggers are fitted with sacrificial anodes to reduce the risk of corrosion on long deployments.
- Connectors and anodes are shielded from knocks and are housed within the 60mm diameter instrument

Designed with operational efficiency in mind

- Deployment wizard to allow quick and easy logger set up
- Test data outputs as an industry standard csv file and report
- Easily transportable with alkaline and NiMH battery options
- Faster download via the new optical modem or serial cable



Hassle-free maintenance

- User-changeable standard AA size batteries available across the world – purchase locally or order direct from Aquatec
- Service and support plans available at time of purchase or at any time during ownership

Aquatec services

- Custom instruments and accessories – design services for new instruments, customisation and system integration

Deploying the HYDROlog 3000

Deploying your HYDROlog 3000 is simple with the new-look and expanded AQUAtalk software. There are 4 methods of setting up the instrument, depending on the complexity of your deployment:

Basic

For straight-forward sampling regimes, the basic mode allows you to set the following variables:

- Date and time
- When to start logging - instant start or at a set date and time
- Continuous sampling
- Sampling frequency

Logging Start
Select when you would like the logger to begin recording data

Instant Start

Start at : :

Advanced

A wider set of regime variables are available with the advanced mode. In addition to those features above, you can also set the following:

- Triggered logging - use an external trigger to start logging
- NMEA output for real time data
- Burst sampling
- Variable sample rates - sample different channels at different multiples of a base sample rate
- Sample averaging - average the samples and only store the averaged value
- Intermittent logging - select the hours, dates and months you would like to log (e.g. only log data in March and May)

Logging Start
Select when you would like the logger to begin recording data

Instant Start

Start at : :

Triggered Logging

- Triggering causes one burst of data collection.
- Triggering causes start of logging
- When trigger is active, logger is logging
- Start Logging with magnet

No Logging
Only send NMEA messages for realtime application

Channel Selection
Enable channels you want to log. Individual channels can be averaged (Avg), the number of samples to average is set by the average over value. Each channel sampling rate can be adjusted individually by changing the interval multiplier.

Channel	Enable	Avg	Gain	Log Status	Interval Multiplier	Sample Interval	Samples Per Burst	Visualisation of logging
Ext temperature	<input checked="" type="checkbox"/>	<input checked="" type="checkbox"/>	x1	<input type="checkbox"/>	1	3.00 s	8	Sample
Pressure	<input checked="" type="checkbox"/>	<input type="checkbox"/>	x1	<input type="checkbox"/>	1	3.00 s	10	Record
Battery	<input checked="" type="checkbox"/>	<input type="checkbox"/>	x1	<input type="checkbox"/>	5	15.00 s	2	Record

Averaged Over Samples

Logging Rate
Set the interval(s) at which you want the logger to record data

Enable Burst Mode

Burst Every Minutes

Samples per Burst

Burst Sample Every Seconds

Visualisation of logging

Sample

Time

Key: ■ Burst 1 ■ Burst 2 ■ Burst 3

Re-deploy

With the click of a button, redeploy the logger using the last stored regime set up.

Pre-defined

The pre-defined mode allows to you load a previously saved regime and apply to the next deployment. This mode is ideal for repeat deployments and quick set up in the field.

Accessing your data - HYDROlog 3000

The HYDROlog is a flexible instrument with both logging and real time capability. As well as the option to log and access data later, data access subsea is possible through modems and displays.

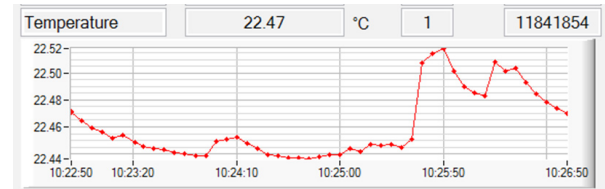


Log and access later

The HYDROlog 3000 has internal batteries and memory to allow autonomous deployment and later data download via USB. The logger has an internal memory of 64MB, with upgrades available on request.

View in real time with a cabled connection

View your data in real time with a cabled connection using the AQUAtalk software supplied with the instrument.

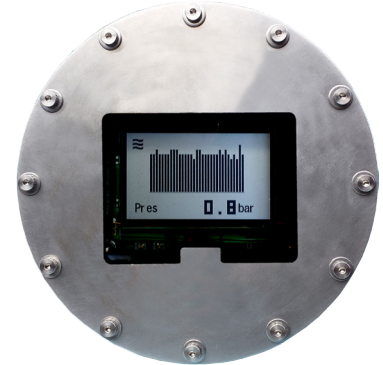


Access your data subsea

Visualise and transmit your data subsea with Aquatec's modem solutions and display.

View your data with the AQUAdisp

- Low power LCD screen
- Displays both figures and graphs
- Displays all active channels including pressure and temperature



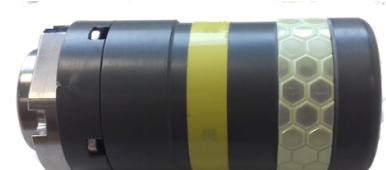
Download your data with the AQUAmodem Op2

- Short range interrogation, commanding and data download
- Provides a seamless link between the logger and a PC
- Designed for use with ROVs or by divers
- Range of 1m
- Download while logging and real time view



Transmit real time readings with the AQUAmodem 500

- Modem allows transmission of real time readings to an acoustic receiver unit
- Standard range of up to 250m at depths of up to 200m
- Available as a modem system



Selecting your instrument

Instruments

Pressure loggers

HYDROlog 3000PT

Test pressure and ambient temperature logger
300, 600 or 1000 bar pressure

HYDROlog 3000PPT

Dual test pressure and ambient temperature logger
300, 600 or 1000 bar pressure

HYDROlog 3000PgT

Test pressure, ambient pressure and ambient temperature logger
300, 600 or 1000 bar pressure

Flow loggers

HYDROlog 3000F

Monitors external flow sensor, test pressure and ambient temperature logger
300, 600 or 1000 bar pressure

HYDROlog 3000Fc

Monitors multiple external flow sensors, test pressure and ambient temperature logger
300, 600 or 1000 bar pressure

Deck loggers

HYDROlog 3100PT

Test pressure and ambient temperature logger in deck case
300, 600 or 1000 bar pressure

HYDROlog 3100F

Monitors external flow sensor, test pressure and ambient temperature logger in deck case
300, 600 or 1000 bar pressure

All HYDROlog 3000 instruments are supplied in a transit case with software, cables, manual, warranty certificate and calibration certificates.

Accessories and upgrades

Memory upgrade

The standard loggers have a memory of 64MB. Memory upgrades are available on request.

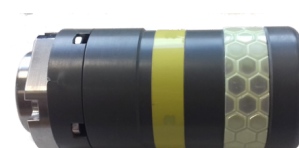
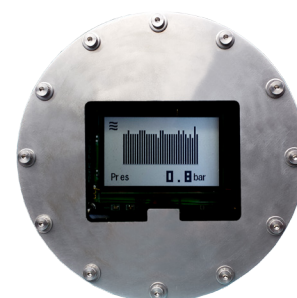
Toughbook PC

Add a Toughbook PC with pre-loaded software to set up, deploy and download data from your logger.

Subsea communication

Aquatec's modems and display allow real time transfer and visualisation of data subsea:

- View your data with the AQUAdisp
- Download your data with the AQUAmodem Op2
- Transmit real time readings with the AQUAmodem 500



HYDROlog 3000PT specification

Sensor Specification

	Pressure	Temperature
Sensor type	Piezo-resistive bridge	Thermistor
Ranges	Absolute: 301, 601, 1001bar	-2 to 35°C standard Other ranges on request
Accuracy	±0.05% FS over temperature range*	±0.1°C
Precision	±0.01% FS over temperature range	±0.1°C
Resolution	0.002% FS	0.001°C

* Including non-linearity, hysteresis, zero offset and end value deviation (corresponds to measured error per IEC 61298-2).

Logger Specification

Parameters	Test pressure, ambient temperature, battery voltage
Data storage capacity	64MB in non-volatile FLASH (standard) 128MB (Upgrade option 1) - 384MB (Upgrade option 2)
Logging lifetime	Depends on logging parameters - up to 1 year
Data retention	>20 years
Sampling	Burst or continuous
Acquisition rate	Up to 8Hz depending on sensors
Burst averaging	Flexible averaging of multiple samples within burst
Communication	USB and either RS232 or RS422
External interfaces	AQUAdisp subsea display, AQUAmodem Op2 optical modem
Battery	4 x AA cells - selected from alkaline, lithium or NiMH
Software	AQUAtalk for Windows for configuration and download
Attachment	1/4" NPT, BSP or Autoclave (depending on test pressure)
Maximum depth	4000m
Material	316 Stainless Steel, with sacrificial anode
Weight	<5kg in air
Dimensions	Diameter - 60mm, Length - 335mm

Models

HYDROlog 3000PT	Test pressure and ambient temperature
HYDROlog 3000PgT	Test pressure, ambient pressure and ambient temperature (external probe)
HYDROlog 3000PPT	2 test pressures and ambient temperature
HYDROlog 3100PT	Surface housing - test pressure and ambient temperature

HYDROlog 3000F specification

Sensor Specification

Flow sensor type	5V TTL or Sine wave types
-------------------------	---------------------------

Sensor type	Piezo-resistive bridge	Thermistor
Ranges	Absolute: 301, 601, 1001bar	-2 to 35°C standard Other ranges on request
Accuracy	±0.05% FS over temperature range*	±0.1°C
Precision	±0.01% FS over temperature range	±0.1°C
Resolution	0.002% FS	0.001°C

* Including non-linearity, hysteresis, zero offset and end value deviation (corresponds to measured error per IEC 61298-2).

Logger Specification

Parameters	Pressure, temperature, battery voltage, flow rate, flowed total volume, concentration (on custom version)
Data storage capacity	64MB in non-volatile FLASH (standard) Up to 2GB (upgrade)
Logging lifetime	Depends on logging parameters - up to 1 year
Data retention	>20 years
Sampling	Burst or continuous
Acquisition rate	Up to 8Hz depending on sensors
Burst averaging	Flexible averaging of multiple samples within burst
Communication	USB and either RS232 or RS422
External interfaces	AQUAdisp subsea display, AQUAmodem Op2 optical modem
Battery	4 x AA cells - selected from alkaline, lithium or NiMH
Software	AQUAtalk for Windows for configuration and download
Attachment	1/4" NPT, BSP or Autoclave (depending on test pressure)
Maximum depth	4000m
Material	316 Stainless Steel, with sacrificial anode
Weight	<5kg in air
Dimensions	Diameter - 60mm, Length - 335mm

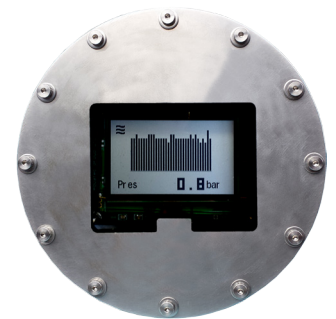
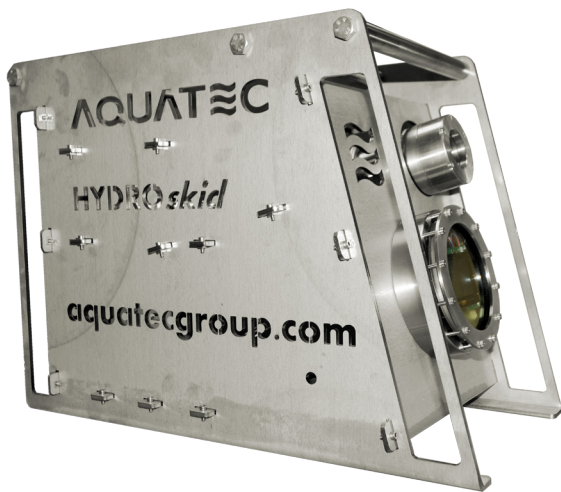
Models

HYDROlog 3000F	External flow sensor, test pressure and ambient temperature
HYDROlog 3000Fc	Multiple flow channels, test pressure, ambient pressure and ambient temperature
HYDROlog 3100F	Surface housing - external flow sensor, test pressure and ambient temperature

Aquatec services for HYDROlog 3000

Systems integration

Aquatec's system integration services can help you if you are looking for real time data with subsea communication, integration of additional parameters or instruments, or custom frames and manifolds for ease of deployment.



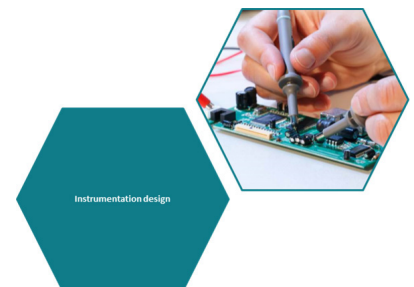
Service and calibration

Aquatec recommend recalibrating your instruments to ensure they continue to deliver reliable and accurate results.

Multi-instrument and multi-year plans available on request.

Custom instruments and accessories

Aquatec has been developing and manufacturing subsea instrumentation since 1990, and has a well-established and diverse range of products. Building upon this knowledge and product base, Aquatec offers an instrument design service for those requiring project / application specific instruments and accessories or new instrumentation that is not available as an 'off-the-shelf' product.



AQUATC

GROUP

Aquatec Group Limited

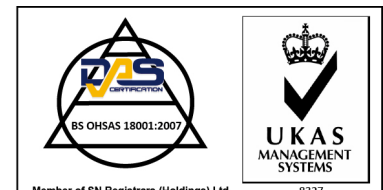
Aquatec House, Stroudley Road, Basingstoke, RG24 8FW, UK

www.aquatecgroup.com

Tel: +44 (0) 1256 416010

Fax: +44 (0) 1256 416019

inquiry@aquatecgroup.com



Simply advanced

Document copyright © 2018 Aquatec Group. HYD3000BG-Jan18v1

Aquatec Group Ltd. Registered in England & Wales No 2523284